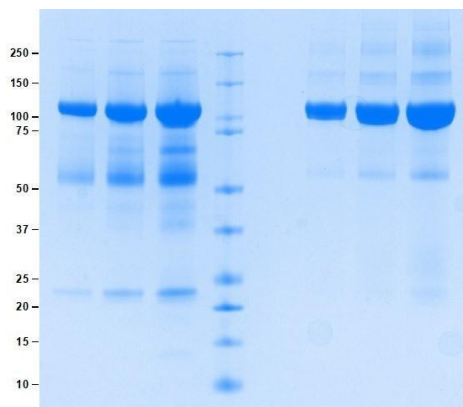


Kininogen, high molecular weight from Human Plasma

np001047

Introduction

High Molecular Weight kininogen, synthesized by hepatocytes, is a multifunctional protein. It is the precursor protein of bradykinin. In addition it is a cofactor in the activation of factor XI, XII, and prekallikrein and a major extra-cellular cysteine proteinase inhibitor. Kininogens inhibit systemic proteases which are thought to have a part in various diseases such as cancer, muscular dystrophy and joint disease.



SDS-PAGE

4-12% Bis-Tris gel, 1x MES

1. Kininogen, HMW 5 µg (Heated/Reduced).
2. Kininogen, HMW 10 µg (Heated/Reduced).
3. Kininogen, HMW 20 µg (Heated/Reduced).
4. Standard.
5. Blank.
6. Kininogen, HMW 5 µg (Not Heated/Non-Reduced).
7. Kininogen, HMW 10 µg (Not Heated/Non-Reduced).
8. Kininogen, HMW 20 µg (Not Heated/Non-Reduced).

Protein Determination

Extinction Coefficient (E) = 0.7 (0.1% at 280 nm, 1 cm pathway).

Molecular Weight

120,000 Da.

Physical Specifications

Form: Frozen.

Purity: $\geq 95\%$ by SDS-PAGE.

Considerations

Storage Conditions: $\leq -70\text{ }^{\circ}\text{C}$

Stability: > 1 year.

Available Packaging

100 μg . Larger aliquots are available upon request.

Buffer

Frozen in 10 mM sodium acetate, pH 5.5, with 250 mM NaCl.

Protein Determination

Extinction Coefficient (E) = 0.7 (0.1% at 280 nm, 1 cm pathway).

Storage/Handling

-80°C . Avoid freeze/thaw cycle.

Source

Human Plasma.

Testing

Donor material is obtained from suppliers that perform a comprehensive infectious disease screening panel. Donor red blood cell units were tested individually by the supplier and found non-reactive for HIV-1/2, Hepatitis B (HBsAg and HBV DNA), Hepatitis C (HCV Ab and HCV RNA), syphilis, West Nile virus (WNV), and Chagas (T. cruzi). Blood group and Rh type were also confirmed. Testing documentation is maintained and available upon request.